

CERTIFICATE OF LOCATION OF GOVERNMENT CORNER

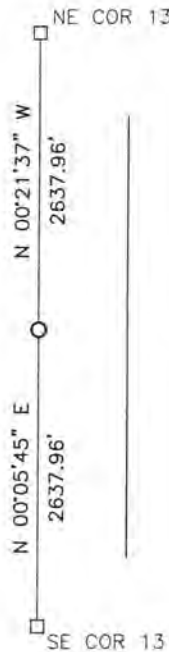
EAST QUARTER Corner of Section 13, Township 108, Range 42, 5TH P.M.

STATE OF MINNESOTA, County of MURRAY

At the corner location shown on the sketch:

- On _____ found a _____
- left monument as found, lowered monument, removed monument (explain)
- On 10/14/16 placed a 5/8" iron with seal #43844

SKETCH OF REFERENCE TIES



FIELD LINE

Minnesota State Plane Coordinate System Murray County Datum NAD83 (1996)

N: 213744.065
E: 485122.794

Statement of evidence relative to this corner location is on back of page.

I hereby certify that this document and the data contained herein was prepared by me or under my direct supervision.

[Signature] 1/30/17
SIGNATURE DATE

Registration No. 43844

- Land Surveyor, Professional Engineer
- County Surveyor, County Engineer

OFFICE OF THE COUNTY RECORDER

County of MURRAY

I hereby certify that this document was filed in the Co. Recorders office at 9:00 A.M. on the 17TH day of FEBRUARY A.D. 20 17

County Recorder Evelyn C. Larson

By _____, Deputy

DOCUMENT NO. _____

Statement of Evidence

In August, 1861, J.W. Myers did the original survey of the east line of the township.

On August 25, 1925, (No name), found an old corner stake and set an auto drive shaft and cast connection on top end with a 5 inch tile around it at the corner.

On November 14, 2016, Bueltel-Moseng Land Surveying set a 5/8" iron with seal #43844 at equal distance between the section corners and in the center of the road.